

Configure Back Up Database in SQL Server 2008



Atdhe Buja

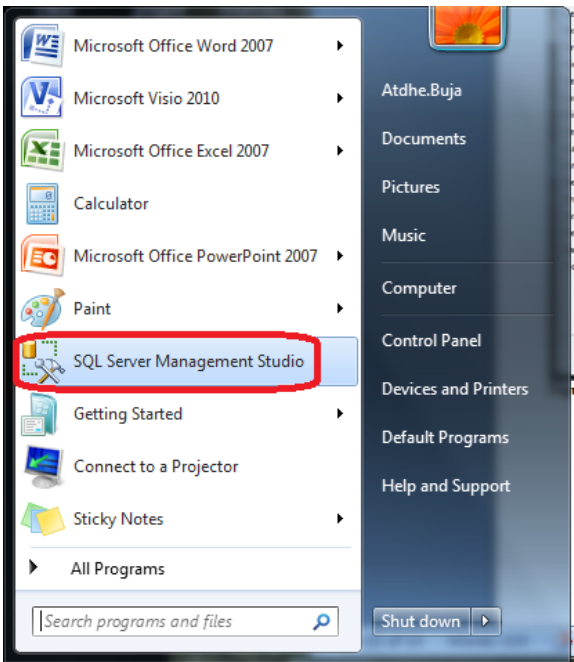


Figure 1 First open SQL Server Management Studio

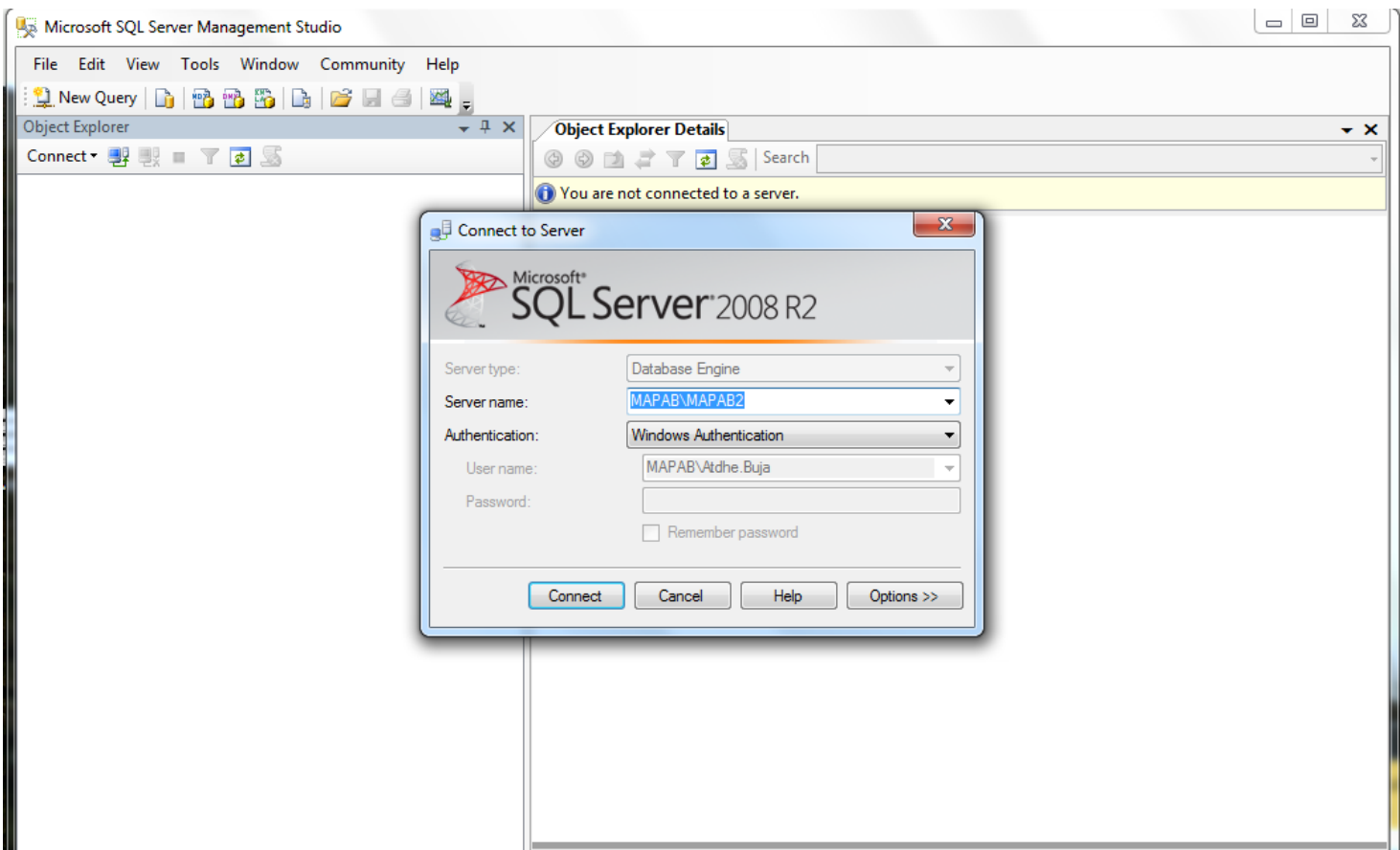


Figure 2 Connect to SQL server instance

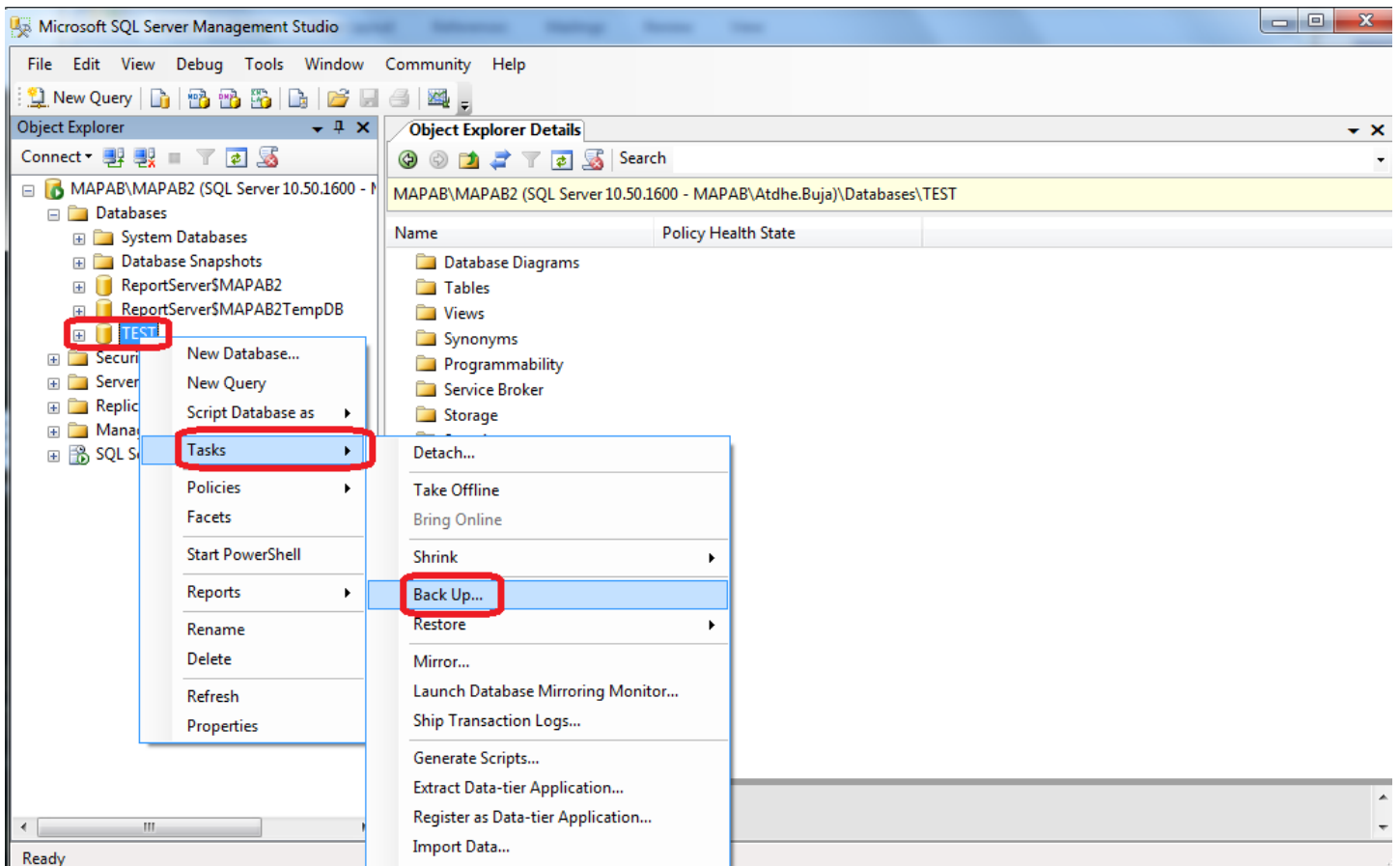


Figure 3 Right click Database Tasks>Back Up...

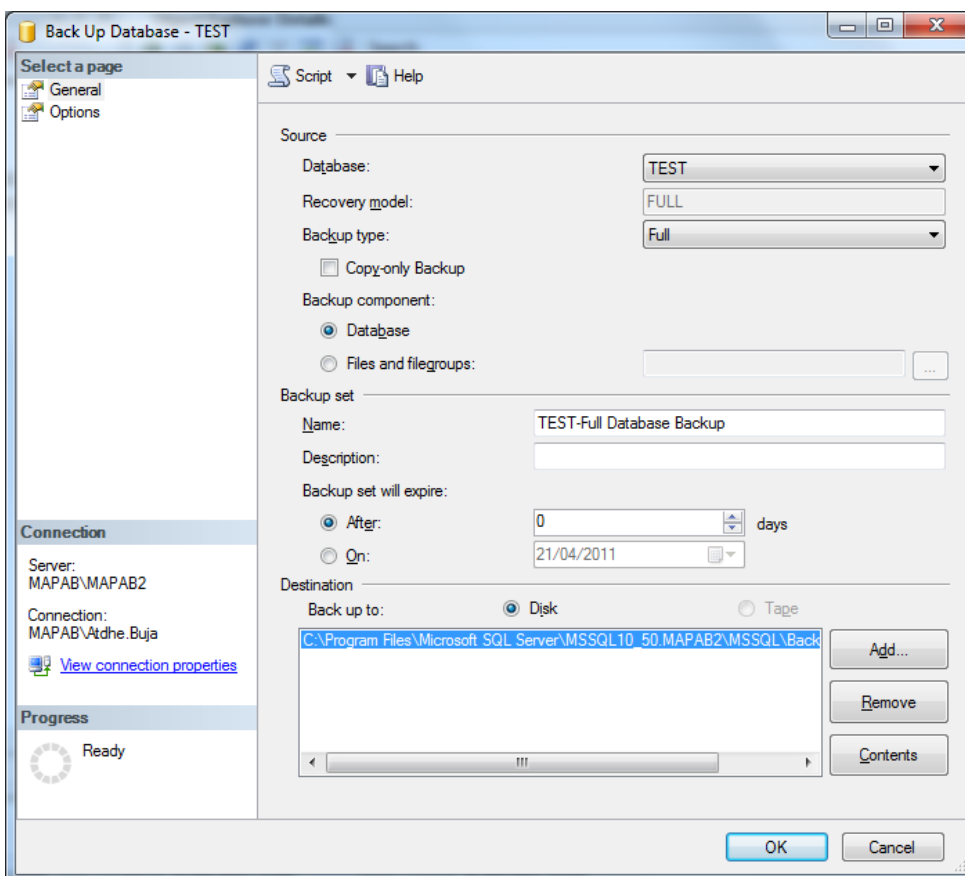


Figure 4 Back Up Database

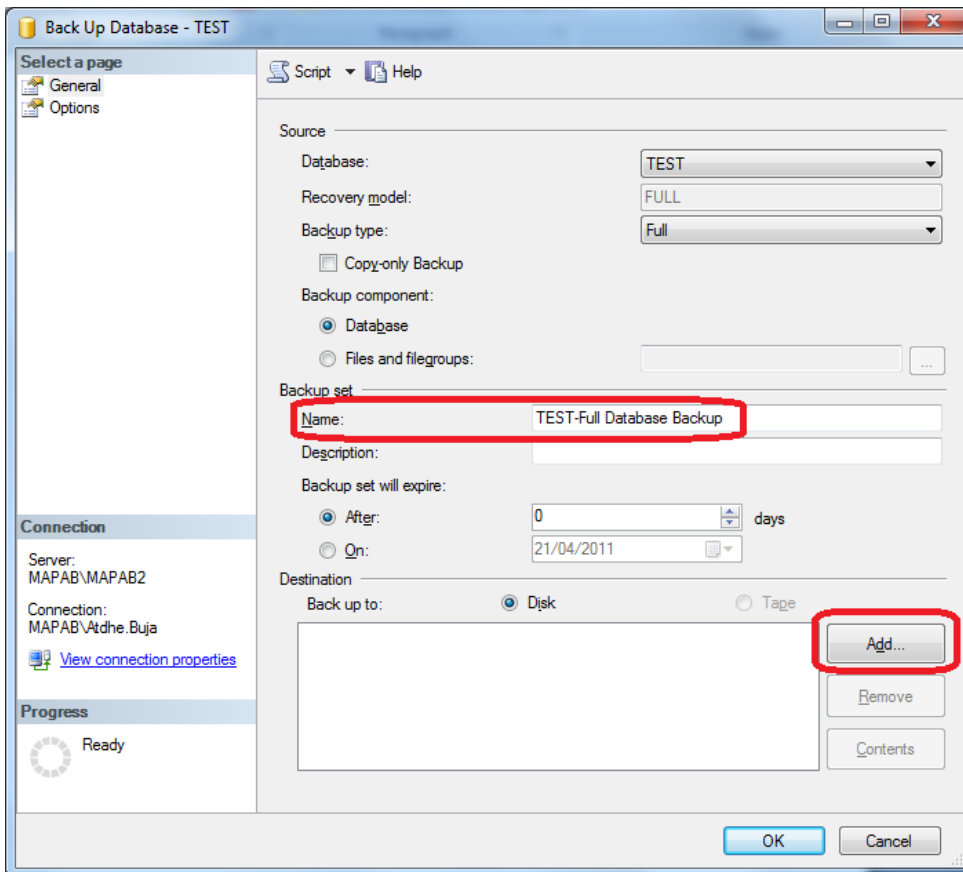


Figure 5 Write Name, Specify the Location where you would like to save the backup file

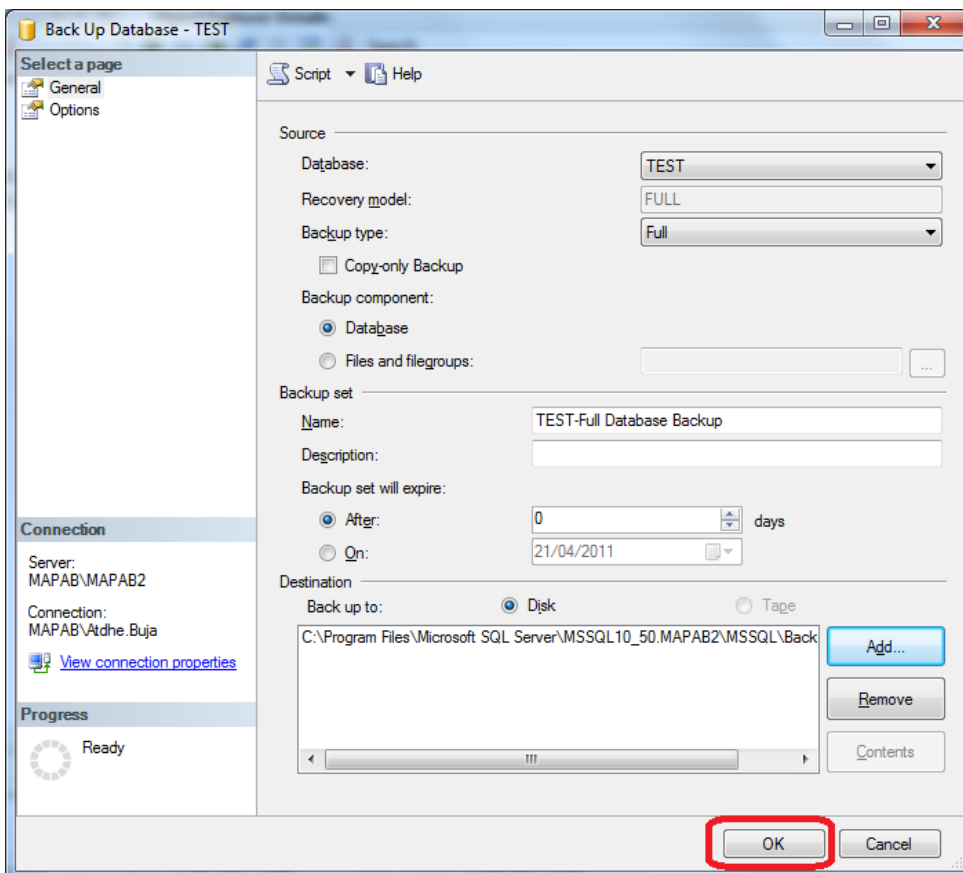


Figure 6 OK