

Create Database SQL Server 2008



Atdhe Buja

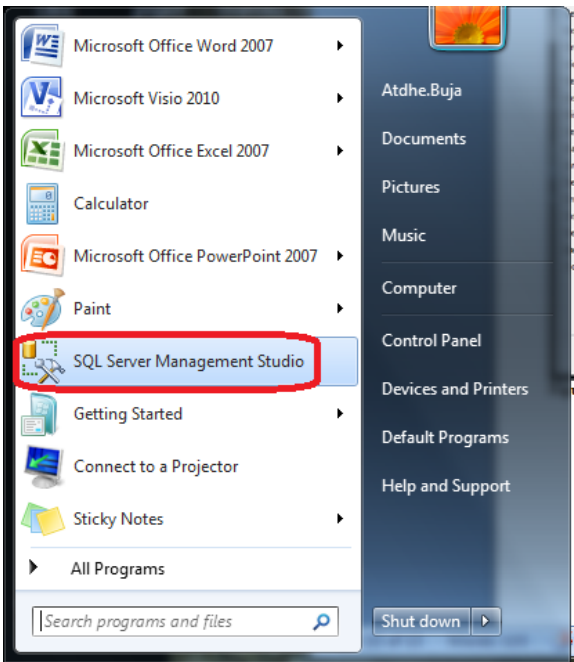


Figure 1 First open SQL Server Management Studio

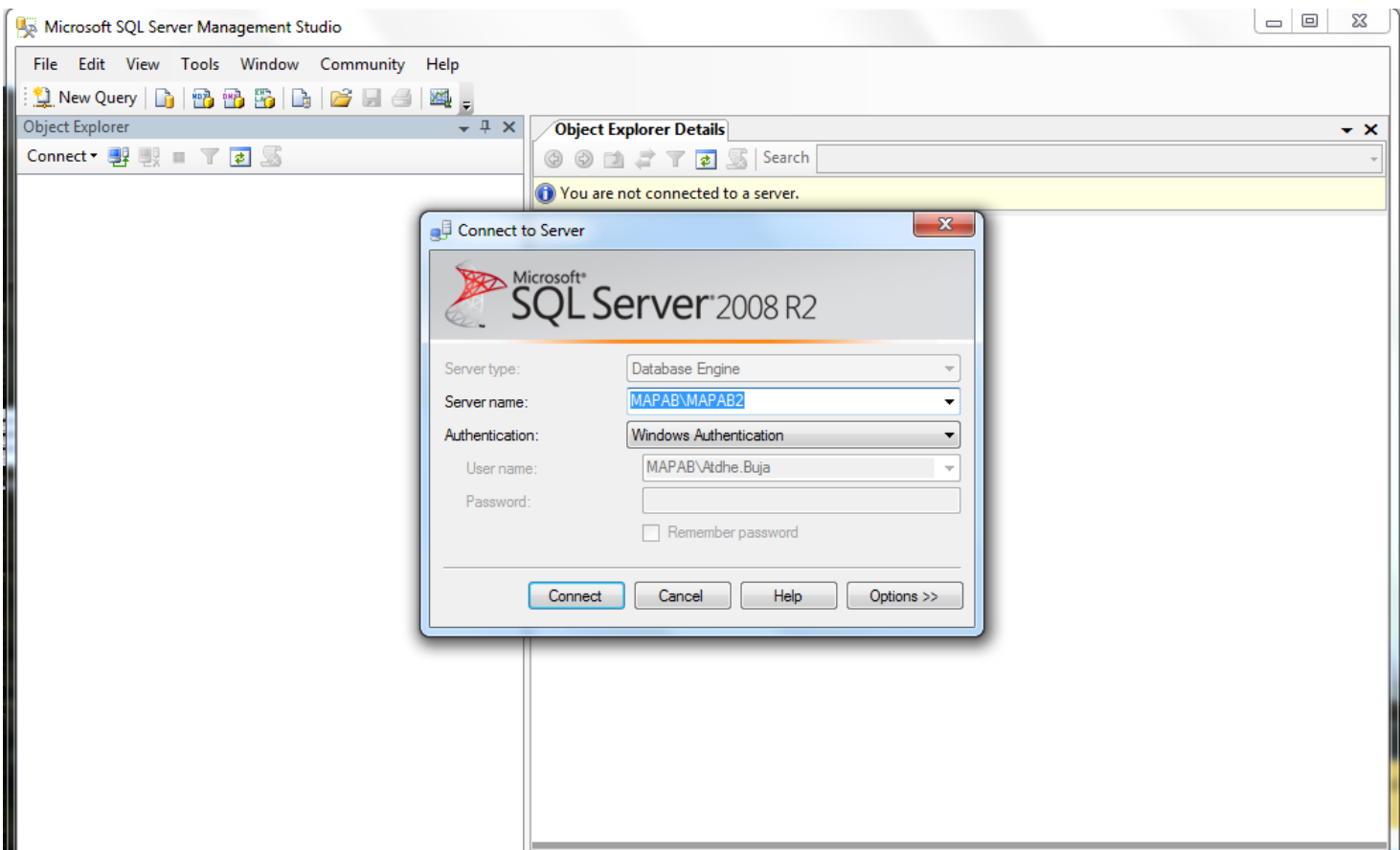


Figure 2 Connect to SQL server instance

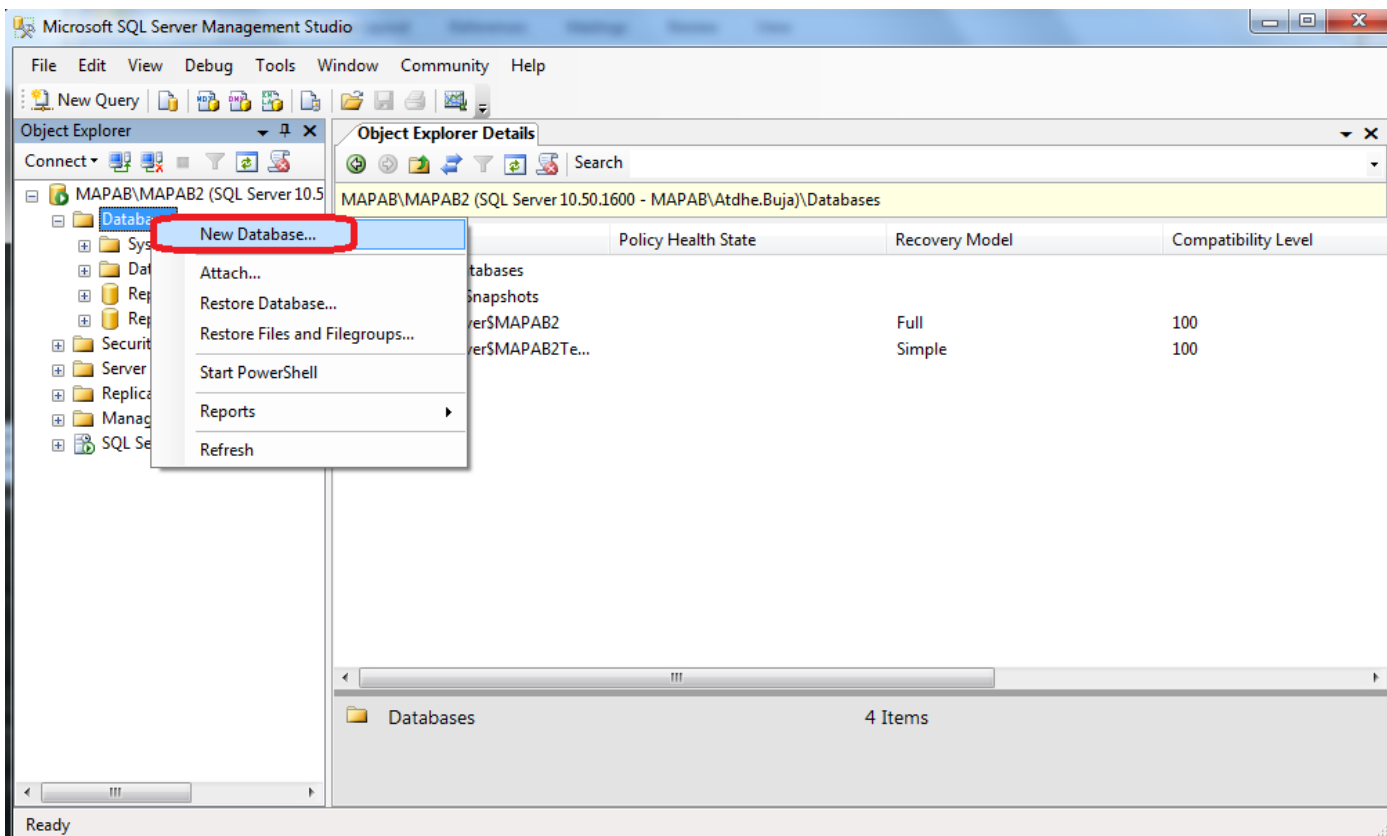


Figure 3 Right click Database > New Database...

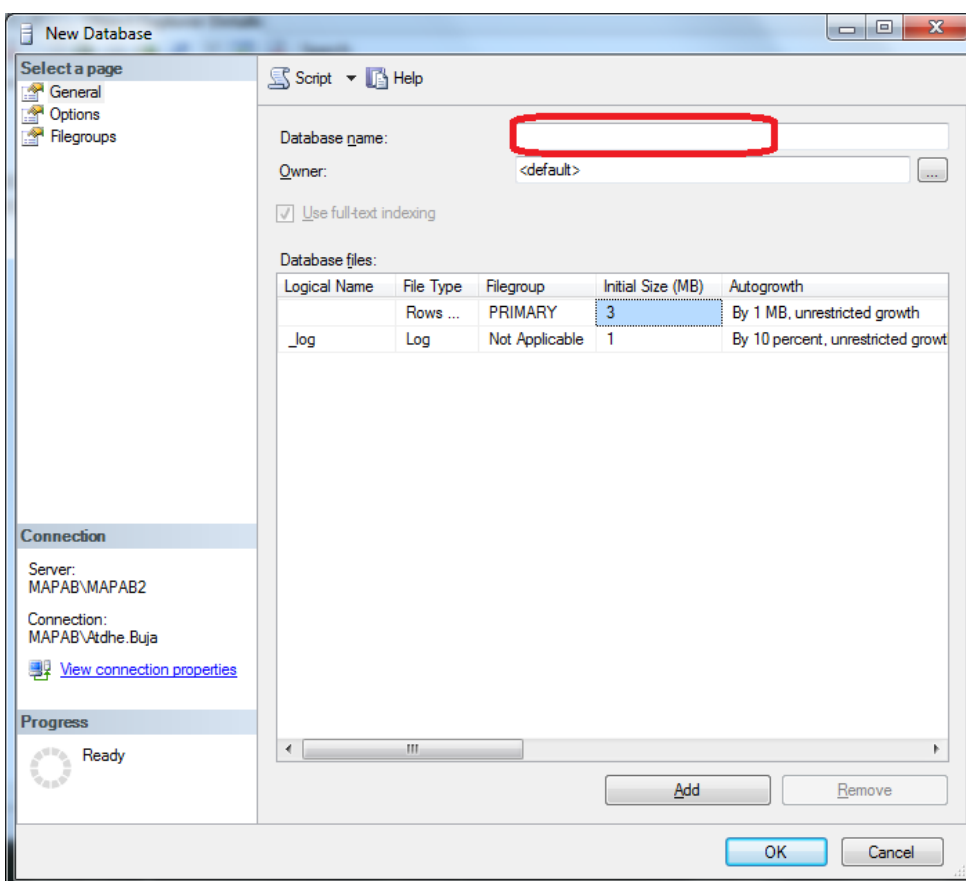


Figure 4 Type Database name:

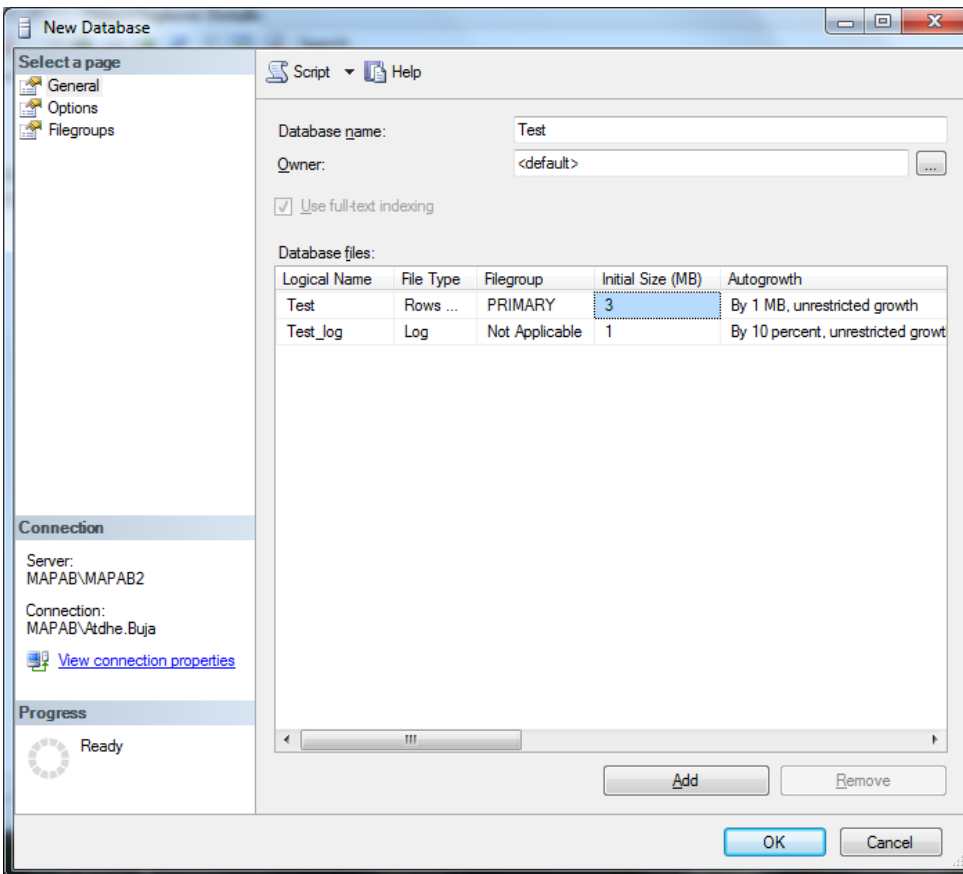


Figure 5 OK

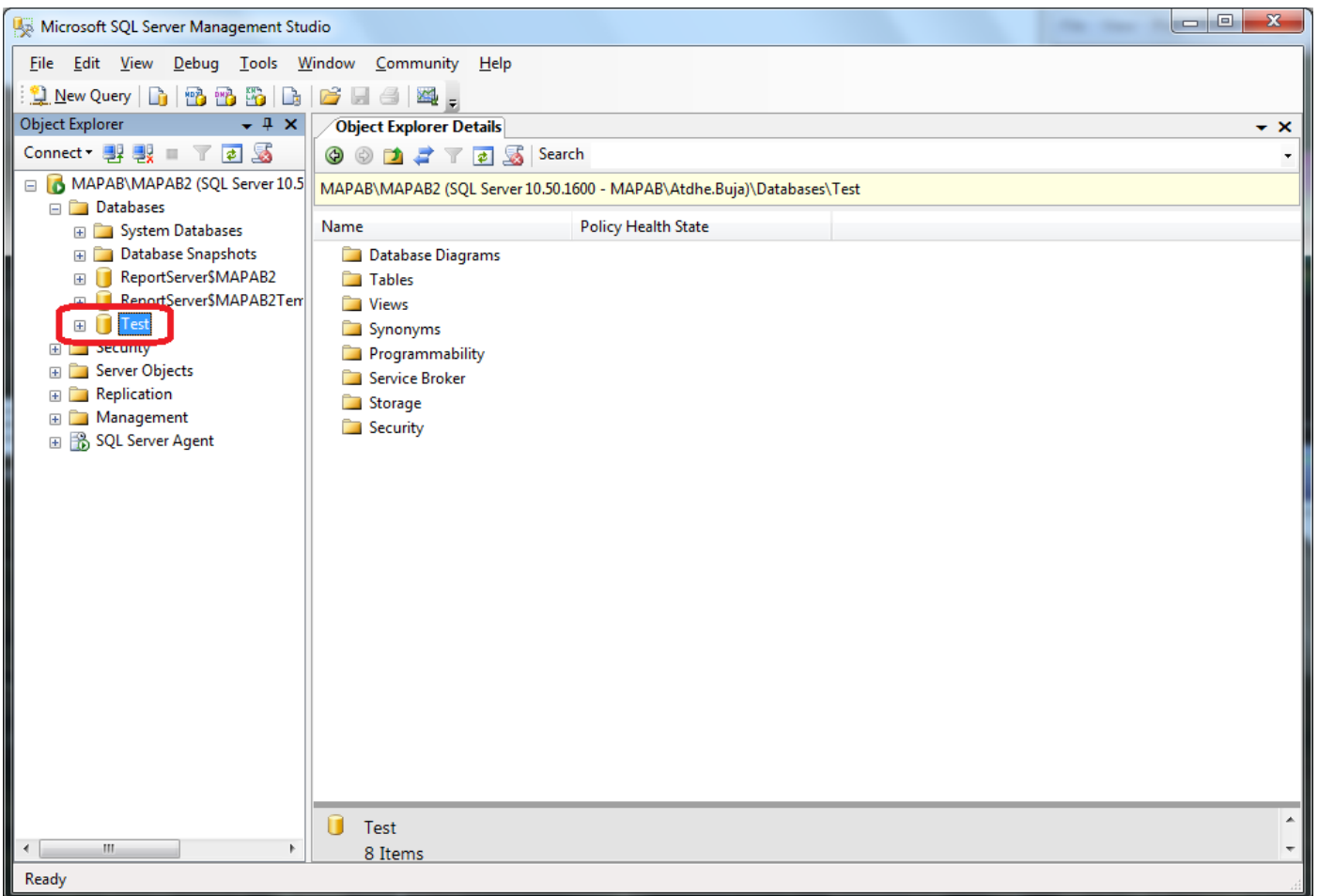


Figure 6 Database has been created – Test

DATABASE PROPERTIES

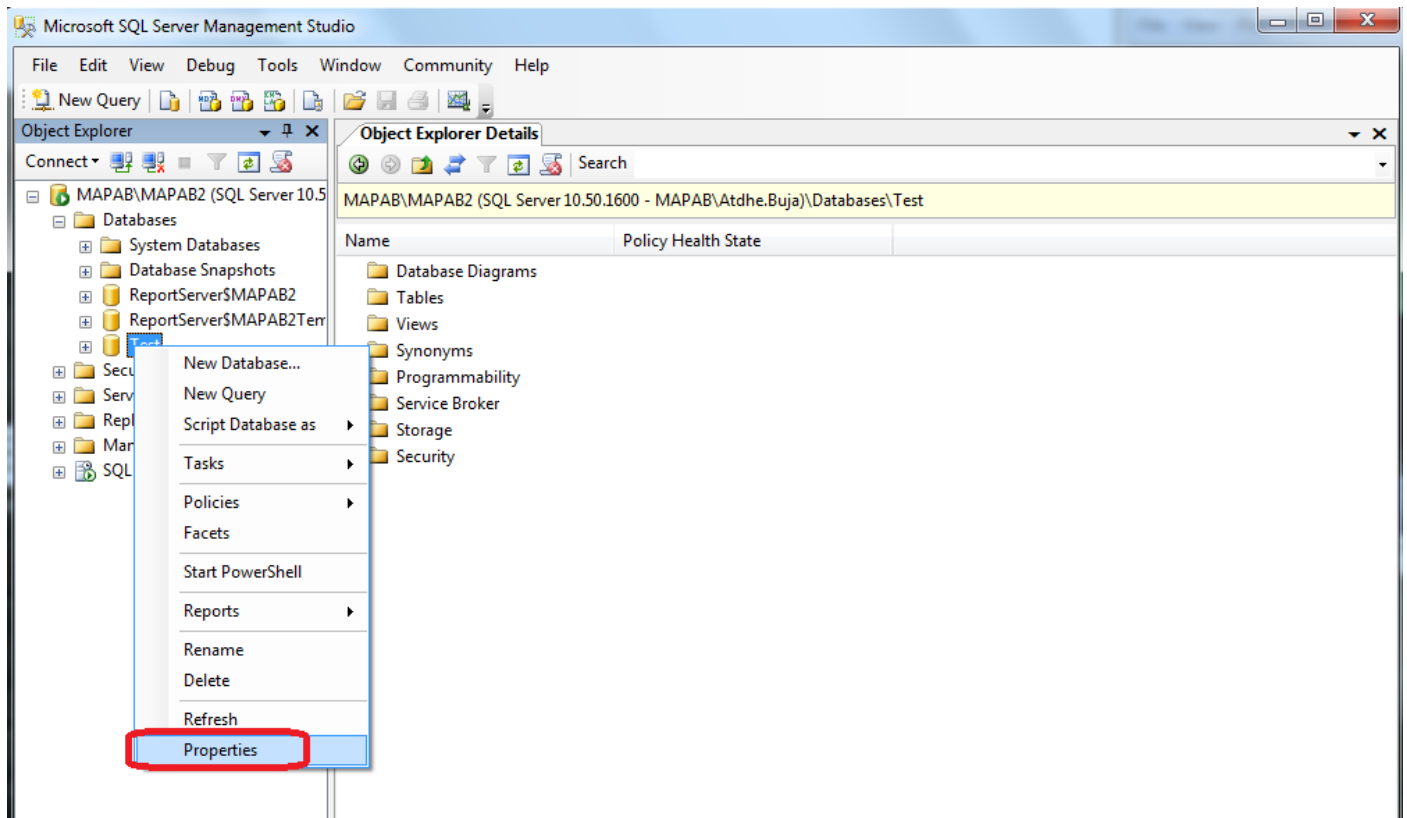
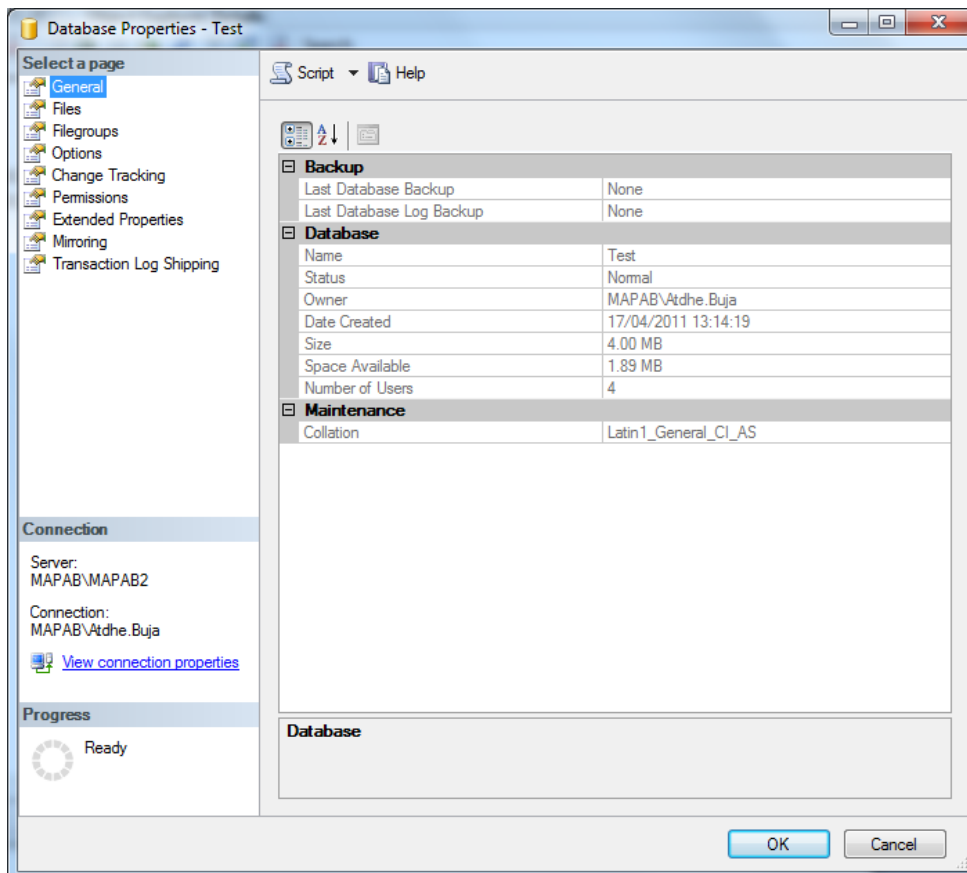


Figure 7 Database Properties



DATABASE DELETE

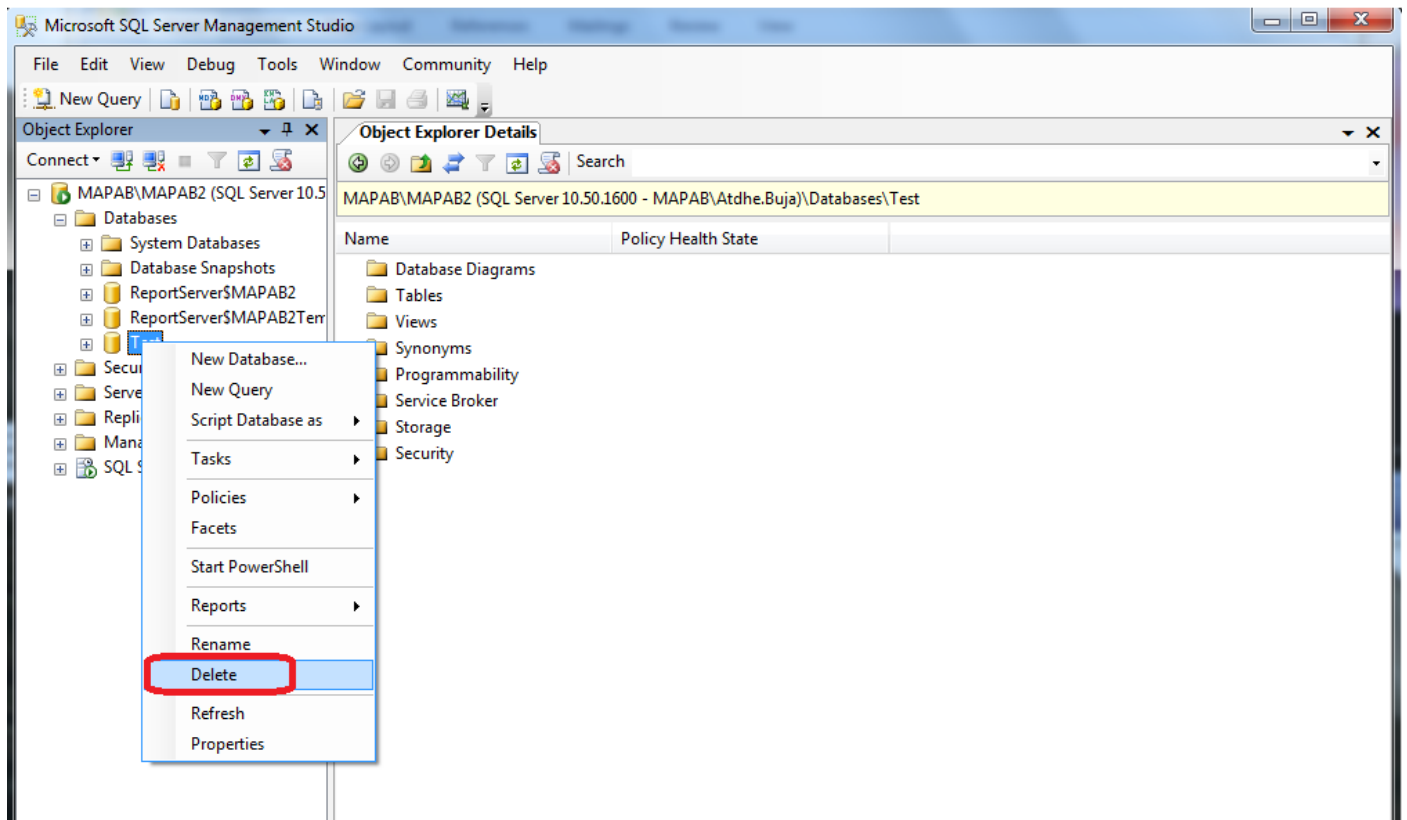


Figure 8 Delete Database

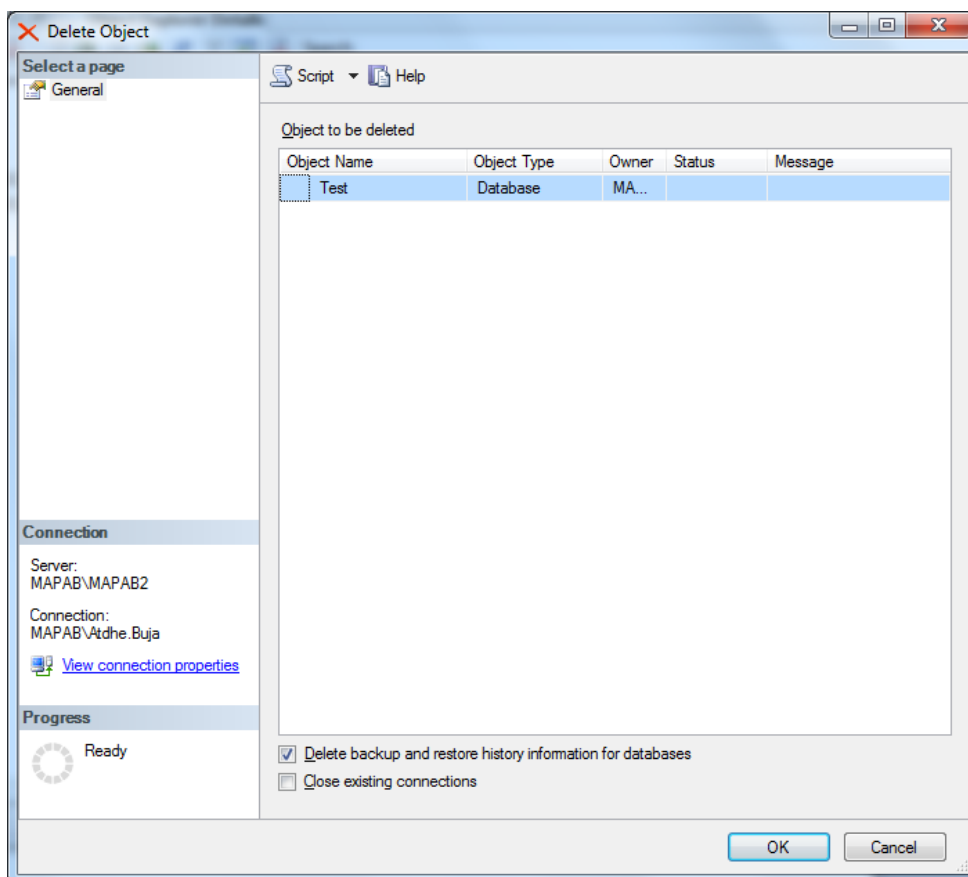


Figure 9 OK