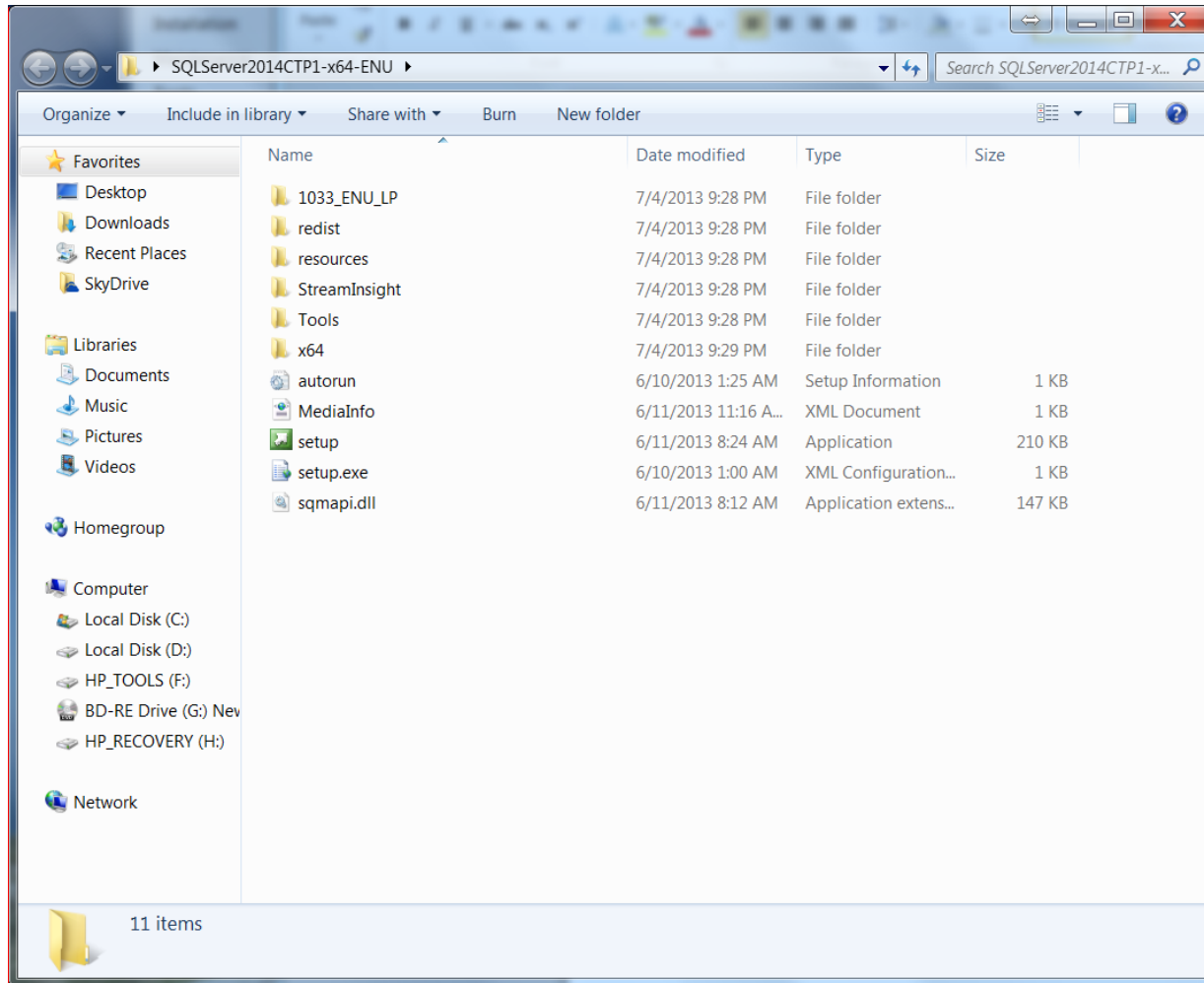


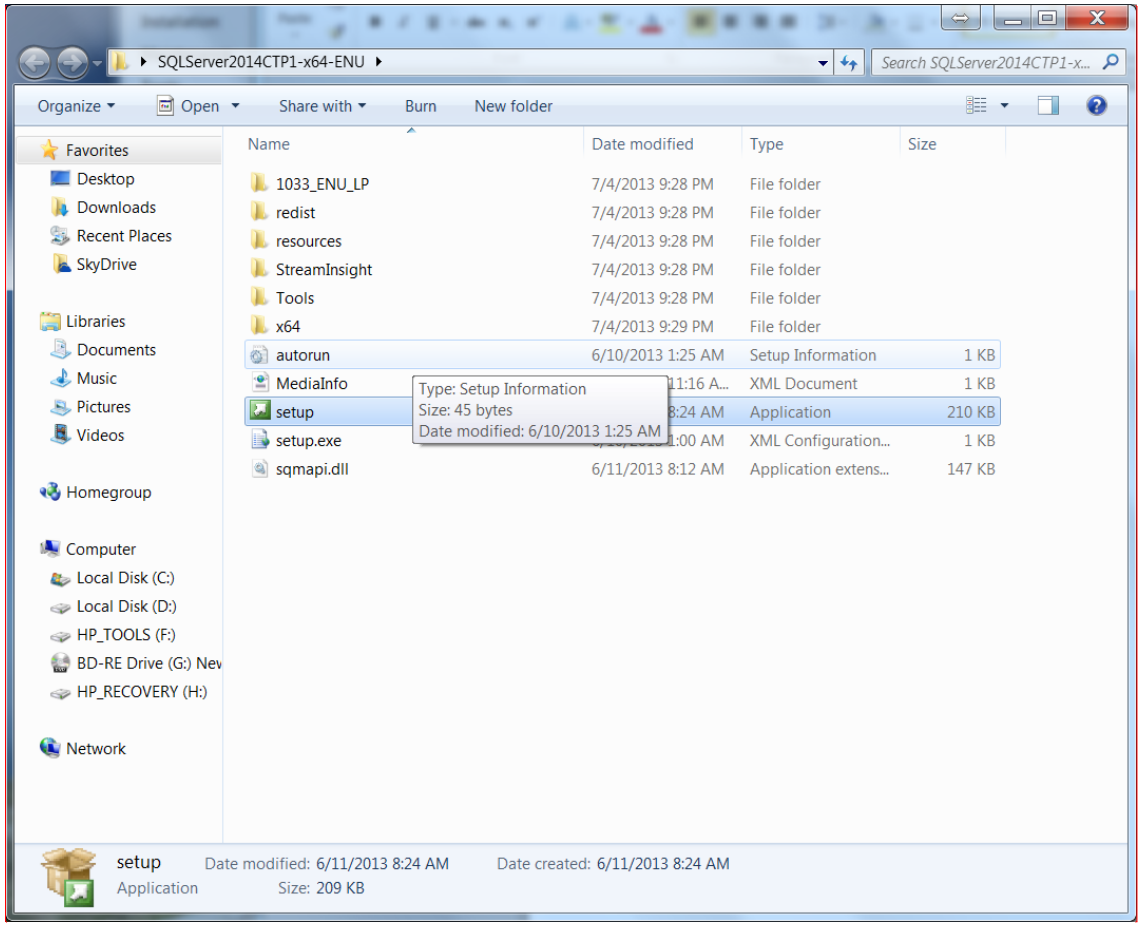
# Installing SQL Server 2014 CTP1 without error



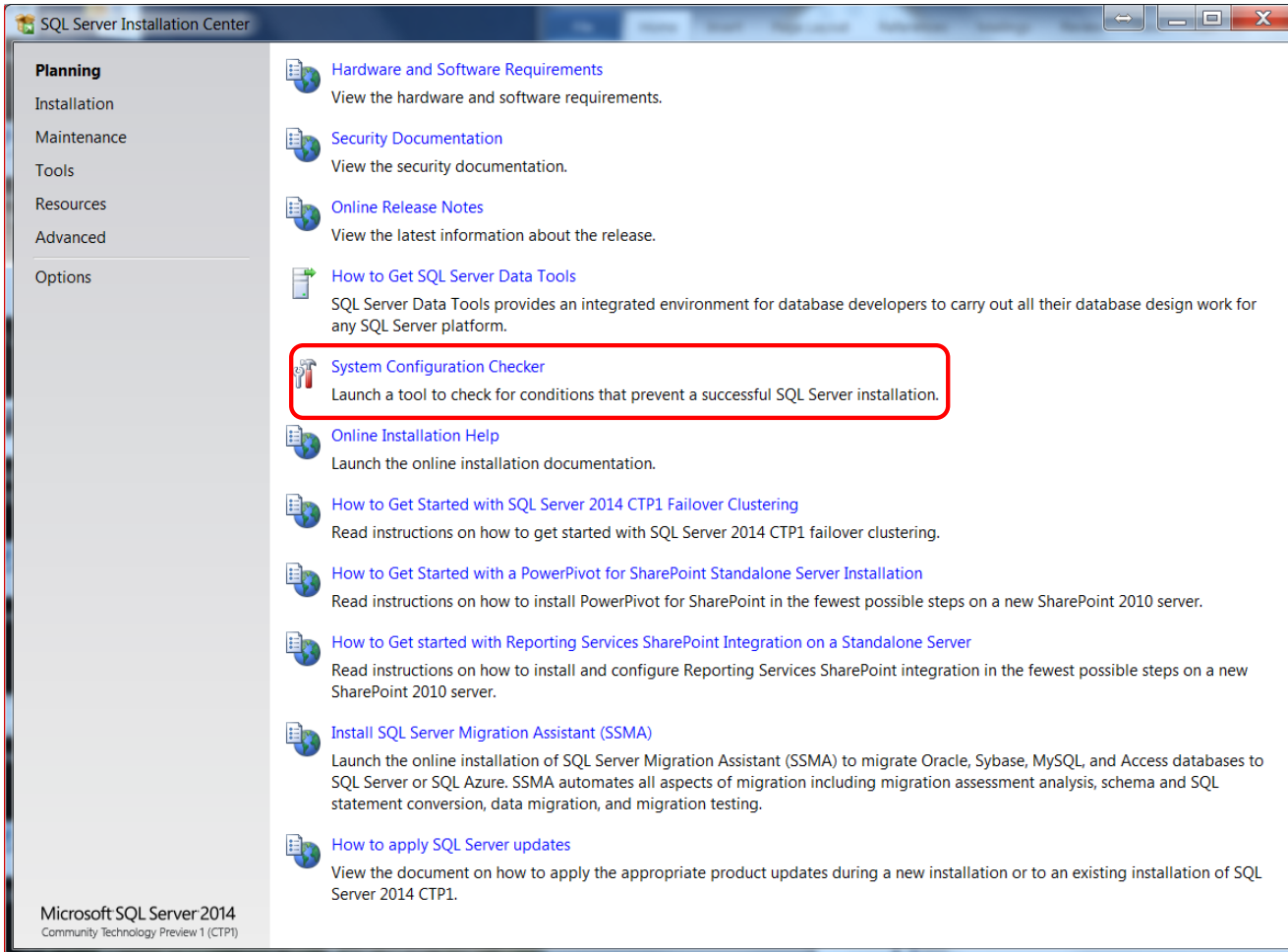
Atdhe Buja



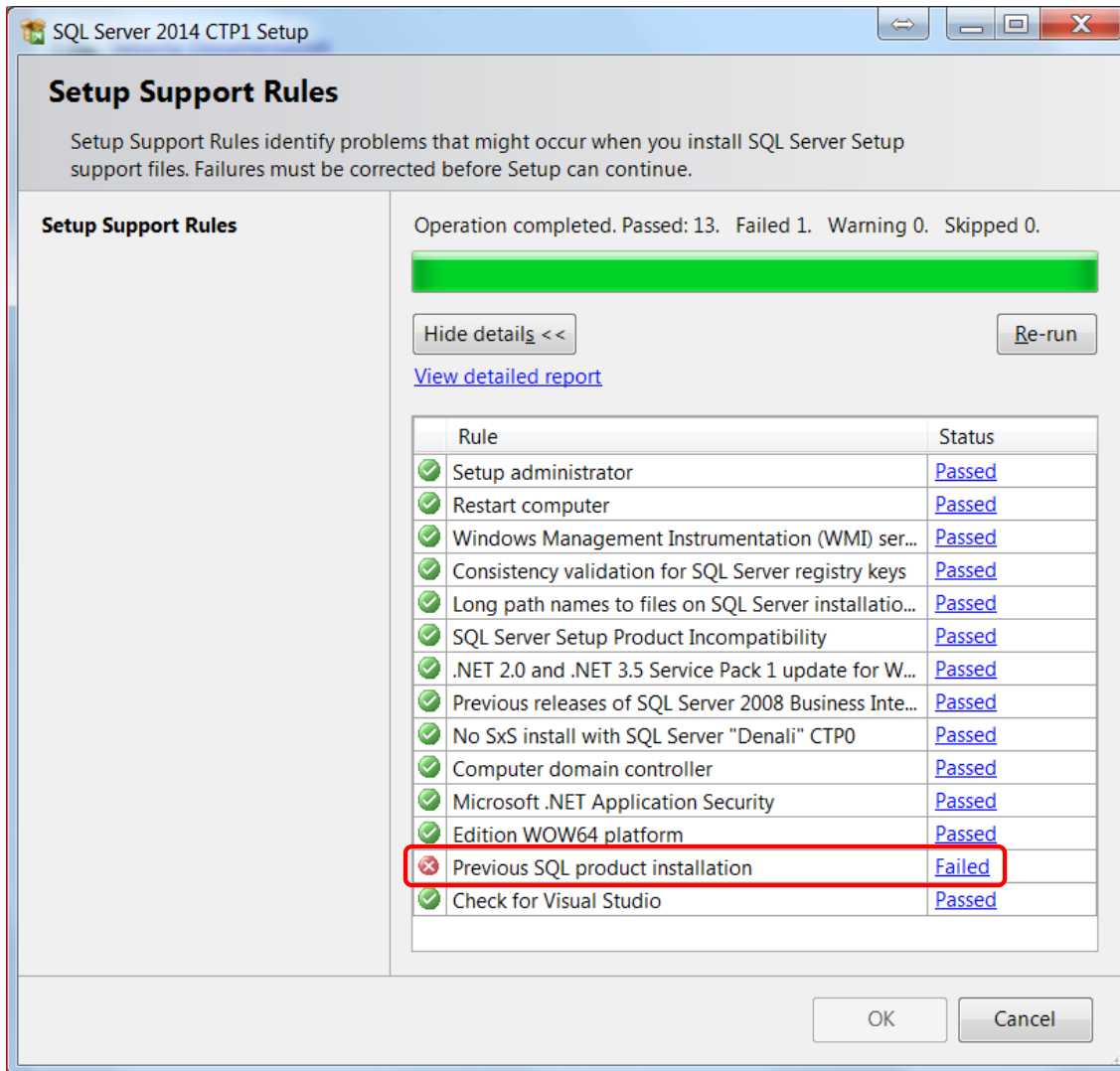
**Comment [AB1]:** Insert the DVD media of SQL Server 2014 CPT1



**Comment [AB2]:** Double-click setup.exe



**Comment [AB3]:** Double-click System Configuration Checker



Comment [AB4]: And wait for report

What you see in the Setup Support Rules to install the SQL Server 2014 CTP1 is one **Rule**: Previous SQL Product installation with **Status**: Failed.